



Zentrum Paul Klee  
Bern

Founded by  
Maurice E. and Martha Müller  
and the heirs of Paul Klee

### Download press images:

[zpk.org/en/about-  
us/media](http://zpk.org/en/about-us/media)

All copyrights are reserved. The complete caption must be used and the artwork reproduced as illustrated. It is only permitted to reproduce the images in conjunction with coverage of the exhibition *Anne Loch. Painting: So what?*

## Press images

**Anne Loch. Painting: So what?**  
18.7.-20.9.2026



**01**

**Anne Loch**

*AL 206, 1987*

Acrylic on unprimed cotton

200 × 140 cm

Private collection

Photo: Dominique Uldry, Bern



**02**

**Anne Loch**

*AL 213, 1987*

Acrylic on unprimed cotton

180 × 280 cm

Estate of Anne Loch

Photo: Dominique Uldry, Bern



**03**

**Anne Loch**

*AL 235, 1987*

Acrylic on unprimed cotton

280 × 370 cm (2 parts)

Estate of Anne Loch

Photo: Dominique Uldry, Bern



**04**

**Anne Loch**


*AL 256, 1988*

Acrylic on canvas

185 × 280 cm

Private Collection. Courtesy Galerie  
Friedrich, Bern/Basel

Photo: Dominique Uldry, Bern

 Schweizerische Eidgenossenschaft  
Confédération suisse  
Confederazione Svizzera  
Confederaziun svizra

Swiss Confederation

Federal Department of Home Affairs FDHA  
Federal Office of Culture FOC

**Press office**

+41 31 328 09 93

[press@zpk.org](mailto:press@zpk.org)

**Zentrum Paul Klee**

Monument im Fruchtländ 3, 3006 Bern

[zpk.org](http://zpk.org)



Zentrum Paul Klee  
Bern

Founded by  
Maurice E. and Martha Müller  
and the heirs of Paul Klee

## Press images

**Anne Loch. Painting: So what?**  
18.7.-20.9.2026



**05**

**Anne Loch**

*AL 279, 1989*

Acrylic on canvas

180 × 280 cm

BKW Energie AG Bern

Photo: Dominique Uldry, Bern



**06**

**Anne Loch**

*AL 356, 1990*

Gouache on cardboard

30 × 40 cm

Private collection

Photo: Dominique Uldry, Bern



**07**

**Anne Loch**

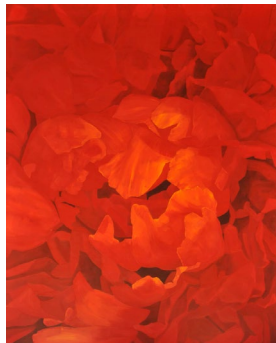
*AL 603, 1993*

Acrylic on canvas

180 × 280 cm

Kunstmuseum Bern, donation

Photo: Markus Mühlheim



**08**

**Anne Loch**

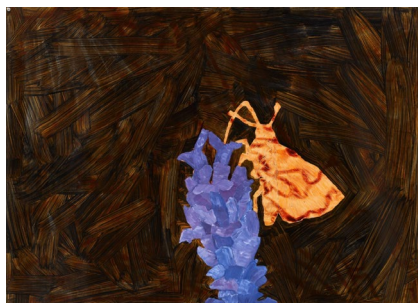
*AL 641, 1996*

Acrylic on canvas

220 × 180 cm

Private collection. Courtesy Sprüth  
Magers

Photo: Dominique Uldry, Bern



**09**

**Anne Loch**

*AL Z 29, 1997*

Varnish and gouache on paper

93 × 129 cm

BONDO Collection

Photo: Dominique Uldry, Bern



Schweizerische Eidgenossenschaft  
Confédération suisse  
Confederazione Svizzera  
Confederaziun svizra

Swiss Confederation

Federal Department of Home Affairs FDHA  
Federal Office of Culture FOC

**Press office**

+41 31 328 09 93

[press@zpk.org](mailto:press@zpk.org)

**Zentrum Paul Klee**

Monument im Fruchtländ 3, 3006 Bern

[zpk.org](http://zpk.org)



**Zentrum Paul Klee  
Bern**

Founded by  
Maurice E. and Martha Müller  
and the heirs of Paul Klee

## Press images

**Anne Loch. Painting: So what?**  
18.7.-20.9.2026



**10**

**Anne Loch**

*AL 925, 2002*

Acrylic on canvas

200 × 142 cm

Private collection

Photo: Dominique Uldry, Bern



**11**

**Anne Loch**

*AL 1308, 2007*

Acrylic on canvas

215 × 360 cm

Estate of Anne Loch

Photo: Dominique Uldry, Bern



**12**

**Anne Loch**

*AL 1431, 2010*

Acrylic on canvas

240 × 155 cm

Estate of Anne Loch

Photo: Dominique Uldry, Bern



**13**

**Anne Loch**

*AL 1432, 1997*

Acrylic on canvas

150 × 235 cm

BONDO Collection

Photo: Dominique Uldry, Bern



Schweizerische Eidgenossenschaft  
Confédération suisse  
Confederazione Svizzera  
Confederaziun svizra

Swiss Confederation

Federal Department of Home Affairs FDHA  
Federal Office of Culture FOC

**Press office**

+41 31 328 09 93

[press@zpk.org](mailto:press@zpk.org)

**Zentrum Paul Klee**

Monument im Fruchtländ 3, 3006 Bern

[zpk.org](http://zpk.org)



Zentrum Paul Klee  
Bern

Founded by  
Maurice E. and Martha Müller  
and the heirs of Paul Klee

## Press images

**Anne Loch. Painting: So what?**  
18.7.-20.9.2026



**14**

**Anne Loch**

*AL 1436, 2010*

Acrylic on canvas

240 × 220 cm

Estate of Anne Loch

Photo: Dominique Uldry, Bern



**15**

**Anne Loch**

*AL 1438, 2010*

Acrylic on canvas

210 × 160 cm

Estate of Anne Loch

Photo: Dominique Uldry, Bern



**16**

**Anne Loch**

*AL Spino 5, 2014*

Permanent marker on black-and-white  
photograph

27 × 20 cm

Private collection

Photo: Dominique Uldry, Bern



**17**

Anne Loch in her studio in Thusis, 1989

Estate of Anne Loch

Photo: Christoph Guler, Thusis



Schweizerische Eidgenossenschaft  
Confédération suisse  
Confederazione Svizzera  
Confederaziun svizra

Swiss Confederation

Federal Department of Home Affairs FDHA  
Federal Office of Culture FOC

**Press office**

+41 31 328 09 93

[press@zpk.org](mailto:press@zpk.org)

**Zentrum Paul Klee**

Monument im Fruchtländ 3, 3006 Bern

[zpk.org](http://zpk.org)